



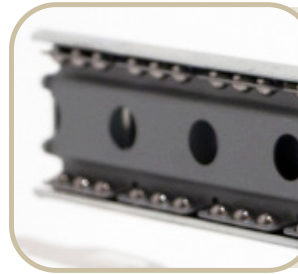
# The Series 4000 Cash Drawer

## The Ultimate Solution for High Volume Environments

### Heavy Duty Solution

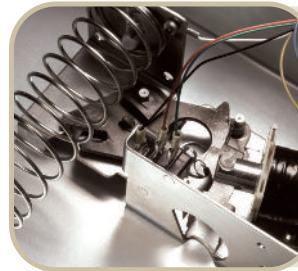
Exceeding customer and industry expectations, the Series 4000 is the ultimate heavy duty cash drawer. Industrial-grade steel ball bearing slides ensure effortless performance and durability.

A robust latch mechanism and a proven four-function lock assembly offer several levels of security. Along with flexible storage space, and various sizing, color and customized options, these features make the Series 4000 another reason for apg's reputation as the preferred choice.



#### Durability

Industrial-Grade Steel Ball Bearing Slides ensures effortless performance and durability.



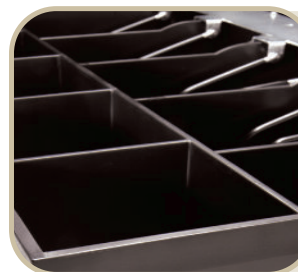
#### Utility

Heavy Duty Latch Mechanism allows a perfect balance between ease of operation and robust construction.



#### Reliable

Built with steel construction and ball-bearing roller wheels, the Series 4000 cash drawer has a life expectancy tested to 4 Million operational cycles.



#### Functional

Heavy Duty Till Equipped with strong dividers and comfort coated hold downs.





## Product Features

<b>Size</b>	See chart below for options	<b>Till</b>	Till configurations to fit virtually any currency worldwide (See chart below for options)
<b>Color</b>	Black (BL)   Cloud White (CW)	<b>Lock</b>	Four Function Lock
<b>Media</b>	Single and dual media slots	<b>Key</b>	Random keying from 10 lock codes is standard (Other lock and key options are available)
<b>Life Cycle</b>	Tested beyond 4 million transactions	<b>Interfaces</b>	Multiple options available (See chart below for options) Closed and latched drawer status switch
<b>Warranty</b>	Limited Lifetime Warranty (Visit <a href="https://apgsolutions.com/warranty/">https://apgsolutions.com/warranty/</a> for required online registration)		

### Series 4000 Part Number Structure

DRAWER FRONT STYLE

COLOR

SIZE (W x D x H)

JB

480

-

BL

1816

-

C

INTERFACE TYPE

OPTIONS

**JB** = Painted Front  
**JD** = Stainless Front  
**JBN** = Painted, Non-media Front  
**JDN** = Stainless, Non-media Front

**BL** = Black  
**CW** = Cloud White

**1317** = 13.3" x 17.2" x 4.2"  
337.8 x 436.9 x 106.7mm  
**1816** = 18.0" x 16.7" x 4.2"  
457.2 x 424.2 x 106.7mm  
**1820** = 18.8" x 20.0" x 4.2"  
477.5 x 508.0 x 106.7mm  
**1821** = 18.8" x 21.0" x 4.2"  
477.5 x 533.4 x 106.7mm

**Blank** = Fixed 5x5 Till (Standard)  
**C** = Coin Roll Storage  
**M1** = Euro Note Lay Flat Format | 8 coin, 5 note  
**M3** = Canadian Dollar Lay Flat Format | 8 coin, 5 note  
**M4** = Euro/Sterling/Chinese Renminbi Inclined Format | 8 coin  
**M5** = Sterling Bill Lay Flat Format @ Coin, 4 Note  
**M6** = Euro/Sterling/China Inclined Format Coin, 8 Note  
**Kxx** = Keyed Alike (xx = key #)  
**E2** = European Power Supply

**B1A** = Adjustable 4x5 till (1317 only)  
**B4A** = Adjustable 4x8 till (1317 only)

\* Requires detachable cable sold separately.

\*\* Numerous Ethernet Interface options, see NetPro® brochure. Refer to Connectivity Guide for interface cable detail. Customization available.

## Best In Class Solutions

apg has taken its 40+ years of cash management experience and now offers a suite of Best in Class cash drawer solutions. Our innovative designs are manufactured to meet the requirements of a variety of transactional environments all the while offering a consistent out-of-box lifetime performance. apg tests all of its cash drawers with the appropriate amount of weight for the Class/Family to emulate a loaded till at the retail point of sale.

FAMILY NAME	PRODUCT LINE	DESCRIPTION	BUSINESS ENVIRONMENTS	TESTED	WARRANTY
Light Duty	- Arlo - ECD	Cost-effective, highly functional economical cash drawers that offer excellent value.	Low transaction volumes such as Kiosks, Food trucks, & Specialty Retail.	500,000 Transactions Tested with 4 lbs (1.8kg)	Up to 1 year
Standard Duty	- Vasario - Phoenix - Microlite - STD2000Lite - E3000 - E3900	Standard cash drawers includes features, such as multi-function locks, drawer status reporting and interface options, found in more expensive cash drawers.	Medium transaction volumes such as Hospitality, Retail and Convenience.	1 Million Transactions Tested with 6lbs (2.7kg)	Up to 3 years
Heavy Duty	- Series 4000 - Skimming Range - Series 100 - STD2000 - SL3000 - MAXI - E3600 - FLEXI - MOD03/04 - NANO - MICRO - CURVI	Exceeding customer & industry expectations, Legend cash drawers are the ultimate heavy duty & performance cash drawers.	High transaction volumes such as Fast Food and Grocery.	4 Million Transactions Tested with 8 to 12 lbs (3.6-5.5 kg)	Up to 5 years or lifetime limited warranty**

\*For more information on product warranties, view APG's full warranty statement online at <https://www.apgsolutions.com/warranty/>  
\*\*Lifetime warranty only available for Series 4000 with registration