



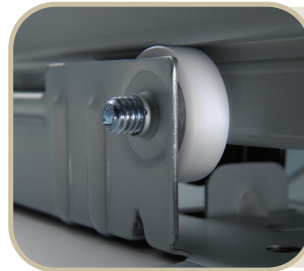
Vasario® Series Cash Drawer

A Cost Effective Solution for Low Volume Environments

Genesis™ Product Family Solution

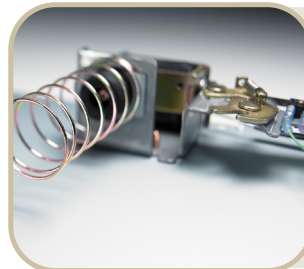
The perfect solution for applications that can be addressed with a Genesis™ product family cash drawer. The Vasario® Series is the cost effective choice that doesn't sacrifice quality or dependability.

Each member of the Vasario® cash drawer family is competitively priced and includes features, such as multifunction locks and drawer status reporting, found in more expensive cash drawers. A variety of models with a wide range of size, style, color, interface and till configuration options are available to meet your specific requirements.



Roller Wheels

The roller bearing suspension system provides long lasting performance.



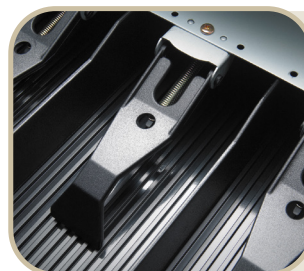
Latch Ejection Mechanism

Tested over one million cycles to ensure a longer lasting drawer.



MultiPRO® Interface

The MultiPRO® Interface adapts to most point of sale platforms.



Durable Plastic Hold Downs

Easy and comfortable lift.



Product Features

Size	See chart below for options	Till	Till configurations to fit virtually any currency worldwide (See chart below for options)
Color	Black (BL) All-White (AW)	Lock	Four Function Lock
Media	Single, Dual and Non-media Slots	Key	Random keying from 1-4 lock codes is standard (Other lock and key options are available)
Life Cycle	Tested beyond 1 million transactions	Interfaces	Multiple options available (See chart below for options) Closed and latched drawer status switch
Warranty	3 Years <i>Limited Warranty. Three (3) year limited warranty will apply to any electrical or mechanical components found to be defective in material or workmanship. All warranty parts or repairs will be made F.O.B. apg's facility.</i>		

Vasario®
Series
Part
Number
Structure

Numerous configurations are available. Contact your apg representative for options.

DRAWER FRONT STYLE

VB = Painted front with dual media slot(s)
VBS = Stainless front with dual media slot(s)
VP = Painted drawer with front (non-media)*
VS = Stainless front (non-media)*
*1416 and 1616 size only

COLOR

BL = Black Texture
AW = White*
*Excludes 1618 and 1915

SIZE (W x D x H)

1313 = 13.1" x 13.1" x 3.03"
335 x 335 x 100mm
1416 = 13.6" x 16.3" x 4.01"
350.2 x 414.8 x 101.6mm
1616 = 16.2" x 16.3" x 4.5"
411.5 x 414.8 x 110mm
1618 = 16.2" x 18.3" x 4.5"
411.5 x 465.6 x 110mm
1915 = 18.8" x 15.2" x 4.3"
477.5 x 385.5 x 110mm

VB

320

-

AW

1313

-

B27

INTERFACE TYPE

101 = Push Button (1416 and 1616 sizes only)
320 = MultiPRO® 24V*
320-1 = MultiPRO® 24V w/ CD — 101A cable
420 = MultiPRO® II 12V*
470 = NetPRO® (Only in 1616 size only)
485 = USBProLite™ USB-> Serial Emulation
554B = USBPro™ HID End Node

* Requires detachable cable sold separately. Refer to the Connectivity Guide for interface cable detail.

OPTIONS

1313 Options
B27 = Fixed 4 x 4 Till (US Currency)
B26 = Fixed 5 x 8 Till (Euro)
= Keyed Alike (4 cuts available)*

1416 Options
Blank = Adjustable 4 x 5 Till Standard (BIA)
B35 = Adjustable 5 x 8 Till
B4 = Adjustable 4 x 8 Till
= Keyed Alike 4 cuts available)*

* Keyed randomly is standard

1616 and 1618 Options
Blank = Fixed 5 x 5 Till Standard (B2)
B5 = Adjustable 4 x 8 Till
B10 = Adjustable 5 x 8 Till
B12 = Adjustable 5 x 10 Till
B11 = Adjustable 6 x 8 Till (dual currency)
B13 = Fixed 8 x 8 Till (vertical notes)
B9 = Fixed 5 x 6 Till
CC = Fixed 4 x 7 Till
= Keyed Alike (4 cuts available)*

ACCESSORIES INCLUDE

- Till Covers
- Replacement Tills
- Weighable Coin Cups
- Under Counter Mounting Brackets
- Replacement Keys and Locks
- Replacement Cables

Best In Class Solutions

apg® has taken its 40+ years of cash management experience and now offers a suite of Best in Class cash drawer solutions. Our innovative designs are manufactured to meet the requirements of a variety of transactional environments all the while offering a consistent out-of-box lifetime performance. apg® tests all of its cash drawers with the appropriate amount of weight for the Class/Family to emulate a loaded till at the retail point of sale.

Family Name	Product Line	Description	Business Environments	Tested	Warranty*
Soma™ Family	- Arto® - Minota®	Cost-effective, highly functional economical cash drawers that offer excellent value.	Low transaction volumes such as Kiosks, Food trucks, & Specialty Retail.	500,000 Transactions Tested with 4 lbs (1.8kg)	Up to 1 year
Genesis™ Family	- Vasario® - Phoenix - Microlite - STD2000Lite - E3000 - E3900	Standard cash drawers include features such as multi-function locks, drawer status reporting and interface options, found in more expensive cash drawers.	Medium transaction volumes such as Hospitality, Retail and Convenience.	1 Million Transactions Tested with 6lbs (2.7kg)	Up to 3 years
Legend™ Family	- Series 4000 - Series 100 - SL3000 - E3600 - MOD03/04 - MICRO	- Skimming Range - STD2000 - MAXI - FLEXI - NANO - CURVI	Exceeding customer & industry expectations, Legend cash drawers are the ultimate heavy duty & performance cash drawers.	High transaction volumes such as Fast Food and Grocery.	4 Million Transactions Tested with 8 to 12 lbs (3.6-5.5 kg) Up to 5 years or lifetime limited warranty**

*For more information on product warranties, view apg's full warranty statement online at <https://www.apgsolutions.com/warranty/>

**Lifetime warranty only available for Series 4000 with registration.