

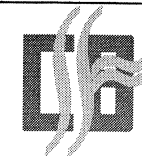
MANUFACTURING/WIRING NOTES:

TEST USING CBT004 WITH BOX CBTU002
FOR 24V
USE CBT1122 WITH BOX CBTU001
FOR 12V

CON-019R - FIT CABLE TO BASEBOARD CABLE
ENTRY HOLE WITH 70136 STRAIN RELIEF

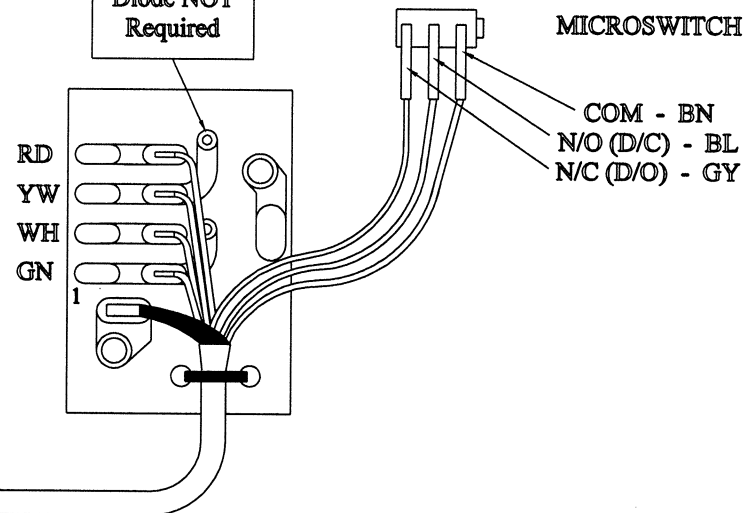
CON-019F - FIT ADAPTOR CABLE TO BASEBOARD
CABLE ENTRY HOLE WITH 70215 STRAIN RELIEF
(REF. SHEET 2) SL3000-0090 & SL3000-0092 ONLY.

CASH BASES



Interface Equivalent To DUA-R02
Dual Wound Solenoid Coils - Parallel Connection 11 ohms, Series Connection 44 ohms
Microswitch Signals Drawer Open (D/O) & Drawer Closed (D/C)
Supplier Part No. ZSZ30000

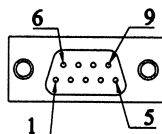
Note:
Diode NOT
Required



9 WAY 'D' TYPE PLUG

HOOD 70411

70017 CONNECTOR



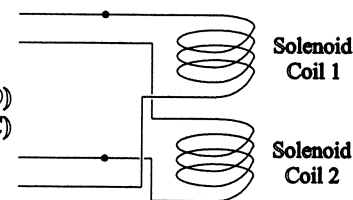
VIEW ON SOLDER SIDE

8 Core Screened Cable - Total Length = 0.6 M

PIN 1 - YW (SOL+)
PIN 2 - RD (SOL)
PIN 3 - ---NOT CONNECTED
PIN 4 - GY (MSW D/O)
PIN 5 - BL (MSW D/C)
PIN 6 - GN (SOL)
PIN 7 - WH (SOL)
PIN 8 - ---NOT CONNECTED
PIN 9 - BN (MSW COM)
DRAIN WIRE TO SHELL

1	YW	Sol + (Coil 1/1)
2	RD	Sol (Coil 2/1)
3		
4	GY	Msw (N/C - D/O)
5	BL	Msw (N/O - D/C)
6	GN	Sol - (Coil 2/2)
7	WH	Sol (Coil 1/2)
8		
9	BN	Msw (Common)
SHELL	SCREEN	Frame Ground

PCB Connections



REVISION/DATE	G 18/2/2008				
ECP No	ECP 10747				
DRAWN BY	PK				
CHECKED BY					
APPROVED BY					

TOLERANCES
LENGTHS BELOW 1m TO BE -0; +5mm
LENGTHS 1-2m TO BE -0; +10mm
LENGTHS ABOVE 2m TO BE -0; +15mm
ALL DIMENSIONS IN mm UNLESS
OTHERWISE STATED

WIRING DIAGRAM
Release Mechanism Assembly
(With DUA Adaptor I/F)
SL3000 & CONCEPT

DRG.NO.	CON-019	REV	G
FIRST USED ON	SHT. 1 OF	2	

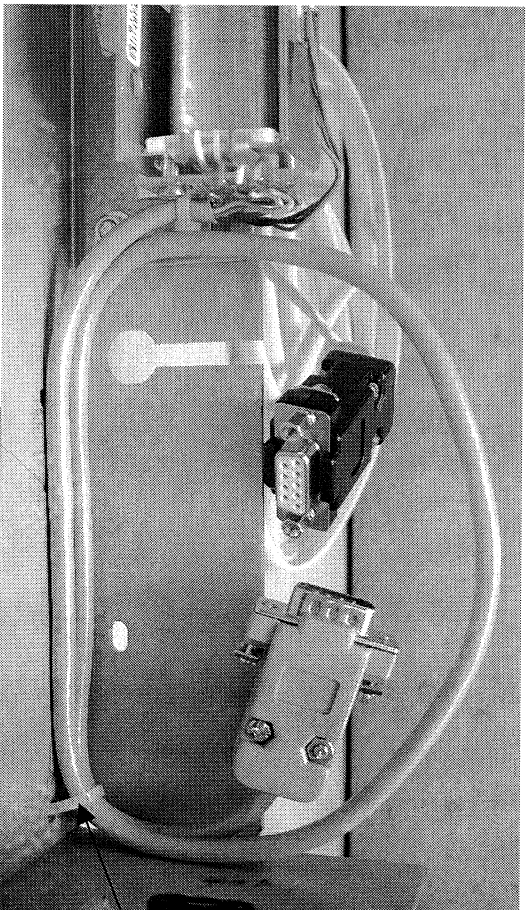
No part of this drawing may be reproduced or transmitted by any form, or
in any means including photocopying and recording, without the prior
permission of Cash Bases GB Ltd. Newhaven, East Sussex.

CON-019G Issue G Sheet 2 of 2 18/2/2008

Reference:- SL3000-0090 & SL3000-0092

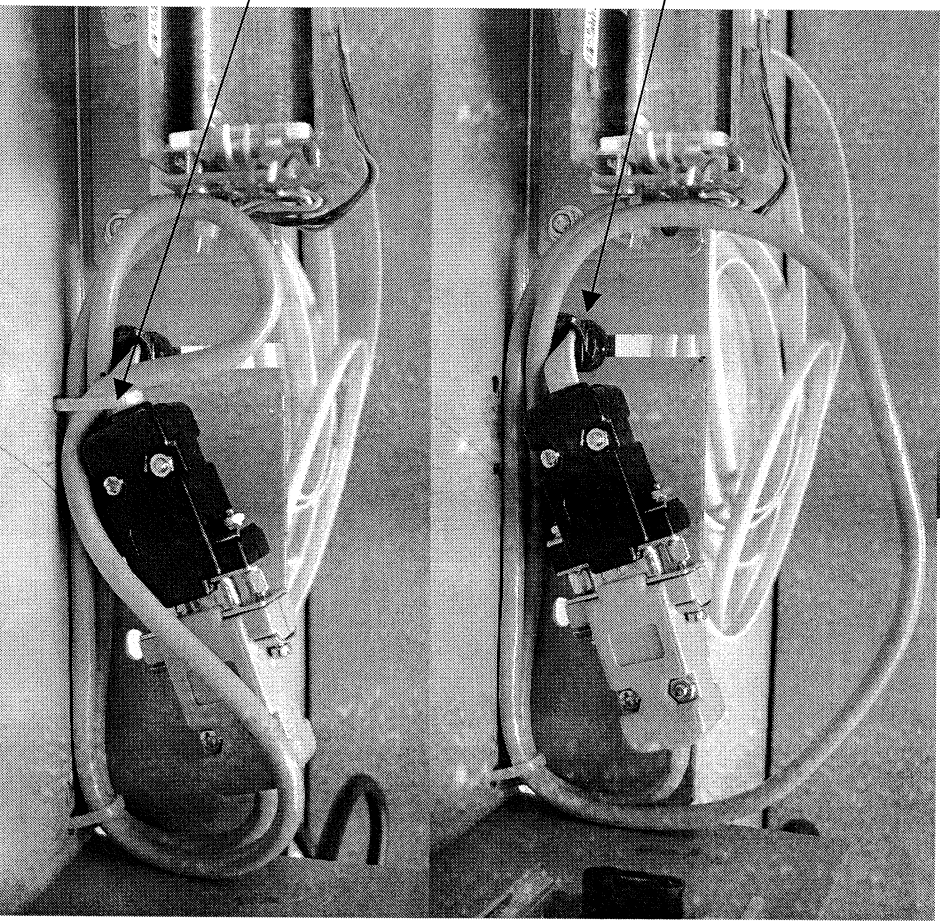
**SL3000-0090
&
SL3000-0092**

The Adaptor Cable is required fitted to the CON-019F Cable inside the Cash Base. Use 70215 Strain Relief

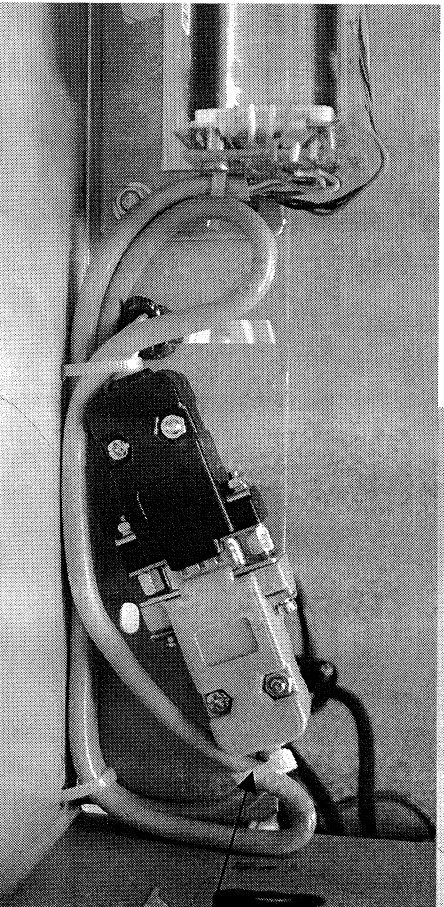


- 1)
Coil the Release Mechanism Cable and Tie to Baseboard as shown.

- 2)
Connect Socket of Adaptor Cable (22767-030) to the Release Mechanism Cable Plug, Fit Strain Relief (70215) keeping Connectors close to the Back of the Baseboard.



- 3)
Fold Release Mechanism Cable downwards and Tie Cable Bunch to Baseboard as Shown.



- 4)
Fold remaining loop of Release Mechanism Cable under Connector Hood and Tie Cables together.