

# Arlo® Cash Drawer

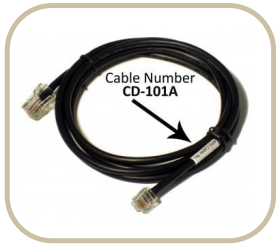
## ACCESSORIES



### Accessories Arlo® Cash Drawer

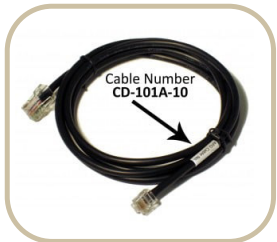
Part Number

Description



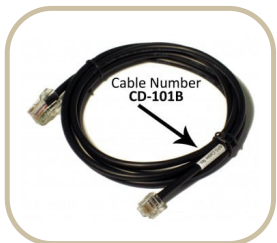
**CD-101A\***

EPSON/STAR Drawer 1, Status Phase High, 5' long



**CD-101A-10\***

EPSON/STAR Drawer 1, Status Phase High, 10' long



**CD-101B\***

EPSON/STAR Drawer 2, Status Phase High 5' long



**CD-D1D2EP\***

Adapter Cable, Dual Drawer Splitter

\*Note: the CD cables only apply to the 320 interface drawers.

# Accessories

---

## Accessory Part Number

## Accessory Description



**KPK-15TA-A10-BX**

- Arlo 330 Till Kit, 4x5 coin
- Works with USD
- Till fits in Arlo product cash drawers which are 330mm wide



**KPK-15TA-A11-BX**

- Arlo 330 Till Kit, 3x5 coin
- Works with Canadian Dollar
- Till fits in Arlo product cash drawers which are 330mm wide



**KPK-15TA-A20-BX**

- Arlo 410 Till Kit, 5x5 coin
- Works with USD
- Till fits in Arlo product cash drawers which are 410mm wide



**KPK-15TA-A21-BX**

- Arlo 410 Till Kit, 4x5 coin
- Works with Canadian Dollar
- Till fits in Arlo product cash drawers which are 410mm wide



**KPK-27-13-BX**

- Under Counter Mounting Bracket
- Works with Arlo Cash Drawers which are 330mm wide



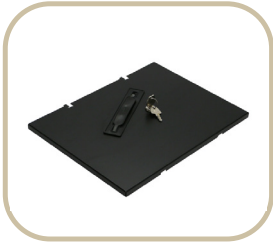
**KPK-27-16-BX**

- Under Counter Mounting Bracket
- Works with Arlo Cash Drawers which are 410mm wide

# Accessories

## Accessory Part Number

## Accessory Description



**KPK-14A-A10-BX**

- Compatible with till inserts KPK-15TA-A10 and KPK-15TA-A11



**KPK-14A-A20-BX**

- Compatible with till inserts KPK-15TA-A20 and KPK-15TA-A21



**KPK-04-XXX**

- Key Kit, 2 keys, coded 015 thru 019.

The XXX in the part number denotes the key code\*

