

# Atlas™

## Cash Drawer

An Economical Solution for Light Cash Use Environments



## BEST IN CLASS

### Economical Solution

The Atlas™ Cash Drawer delivers uncompromising performance and value for light cash use environments and provides efficiency throughout the checkout process.

Purpose built with steel construction and smooth ball-bearing roller wheels, the Atlas Cash Drawer is a reliable solution at an economical price point. The Atlas is designed to handle half a million transactions.

The Atlas is available in two models, the 335 (13") and the 410 (16"), it features single (335) or dual (410) beveled media slots, a three-function lock, and a high-capacity 4 bill x 4 coin (335) or 5 bill x 5 coin (410) till. The system interface connection is a hardwired cable.



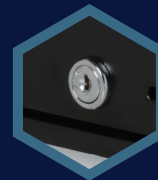
#### Media Storage

Single (335) or dual (410) beveled media slots on the drawer front enable the storing of large bill denominations, receipts, or checks securely under the till.



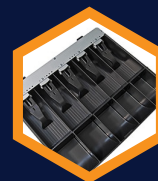
#### Functional

Built with steel construction and roller wheels, the Atlas has a life expectancy tested beyond 500,000 operational cycles.



#### Lock Security

The Atlas provides peace of mind with a drawer open status switch for reporting drawer status back to the POS application.



#### High Capacity

US currency till configuration for 5 bill x 5 coin (410) or 4 bill x 4 coin (335).

▶ 335





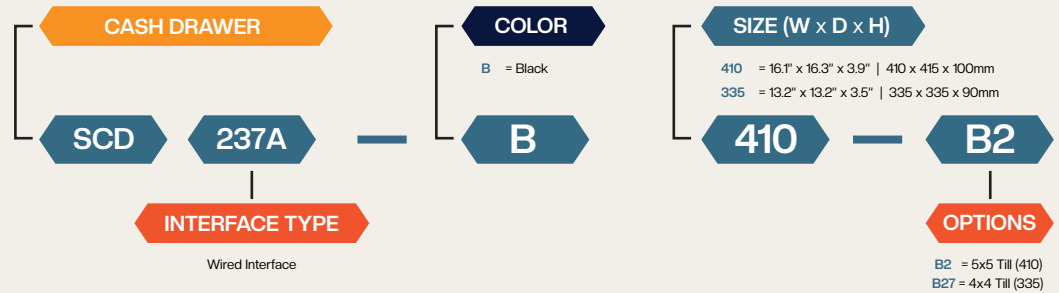
- A** High Capacity Currency Configuration
- B** Beveled Media Slots
- C** 500,000 Operational Cycles
- D** Roller Wheels

## Product Features

<b>SIZE</b>	See chart below for options
<b>COLOR</b>	Black (B)
<b>MEDIA</b>	Single (335) or Dual (410) media slots
<b>LIFE CYCLE</b>	Tested beyond 500,000 cycles
<b>WARRANTY</b>	1 Year (Visit <a href="http://www.apgsolutions.com/warranty">www.apgsolutions.com/warranty</a> for warranty statement)

<b>TILL</b>	5x5 (410) or 4x4 (335) for US
<b>LOCK</b>	Three-Function
<b>KEY</b>	Random keying from 3 lock codes is standard
<b>INTERFACES</b>	Wired (237A)

## Atlas Part Number Structure



Available Accessories: Replacement Tills, Till Covers, and Under Counter Mounting Brackets

## Best In Class Solutions

apg® has taken its 40+ years of cash management experience and now offers a suite of Best in Class cash drawer solutions. Our innovative designs are manufactured to meet the requirements of a variety of transactional environments all the while offering a consistent out-of-box lifetime performance. apg® tests all of its cash drawers with the appropriate amount of weight for the Class/Family to emulate a loaded till at the retail point of sale.

FAMILY NAME	PRODUCT LINE	DESCRIPTION	BUSINESS ENVIRONMENTS	TESTED	WARRANTY	
<b>Soma™ Family</b>	- Arlo - Minota - Atlas	- ECD	Cost-effective, highly functional economical cash drawers that offer excellent value.	Low transaction volumes such as Kiosks, Food trucks, & Specialty Retail.	500,000 Transactions Tested with 4 lbs (1.8kg)	Up to 1 year
<b>Genesis™ Family</b>	- Vasario - Phoenix - Microlite - STD2000Lite - E3000 - E3900		Standard cash drawers includes features, such as multi-function locks, drawer status reporting and interface options, found in more expensive cash drawers.	Medium transaction volumes such as Hospitality, Retail and Convenience.	1 Million Transactions Tested with 6lbs (2.7kg)	Up to 3 years
<b>Legend™ Family</b>	- Series 4000 - Series 100 - SL3000 - E3600 - MOD03/04 - MICRO	- Skimming Range - STD2000 - MAXI - FLEXI - NANO - CURVI	Exceeding customer & industry expectations, Legend cash drawers are the ultimate heavy duty & performance cash drawers.	High transaction volumes such as Fast Food and Grocery.	4 Million Transactions Tested with 8 to 12 lbs (3.6-5.5 kg)	Up to 5 years or lifetime limited warranty**

\*For more information on product warranties, view APG's full warranty statement online at <https://www.apgsolutions.com/warranty/>  
\*\*Lifetime warranty only available for Series 4000 with registration